

CUTLERY POUCH

MATERIALS NEEDED

Fabric:

Use a stiff and inelastic fabric for this project

8.5 x (length cutlery + 2 cm)

8.5 x (length cutlery + 7 cm)

Pressure buttons

Pliers for buttons

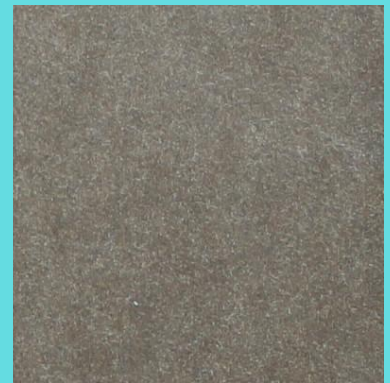


USING VEGAN LEATHER

SNAPPAP OR PAPER-TEX

- What is it?
- Mix of cellulose and latex
- How to make it look like leather
- Wash it in water and crumple it
- How to turn your project right side out
- Make it wet to turn it more easily
- Tips
- Use a longer stitch length to keep the strength of the material
- Use a large needle (110)
- Lasercutting
- It can be cut and engraved with the lasercutter
- Engraving weakens the material
- You can paint / draw on the material

Before washing



After washing



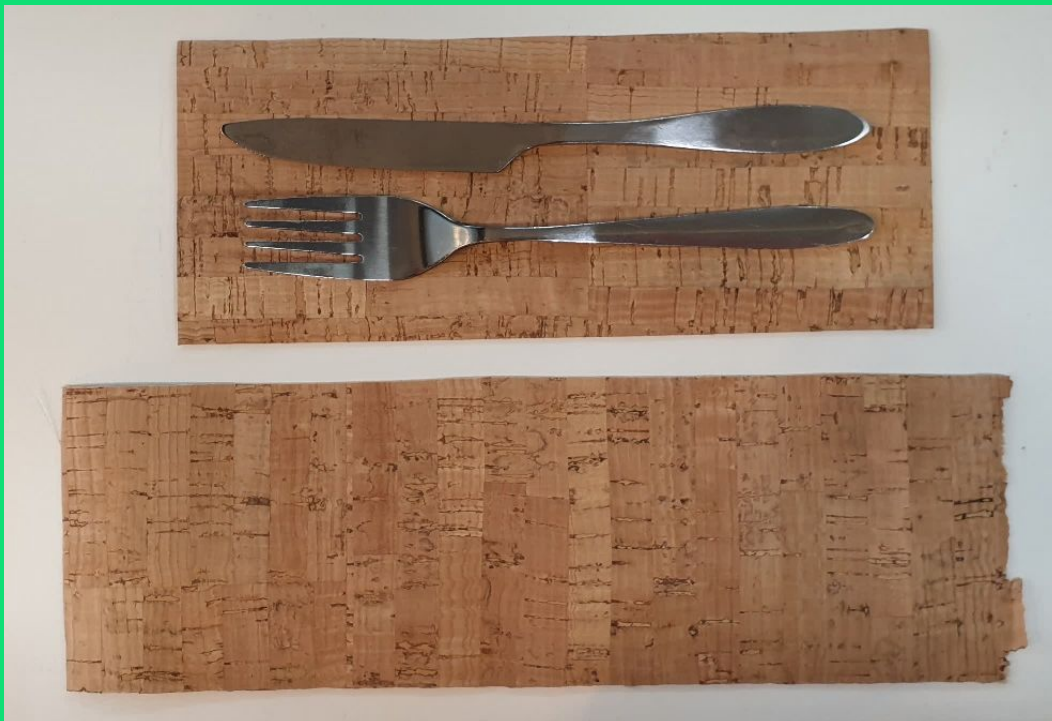
USING CORK FABRIC

- Do not lasercut!
- Made out of a thin layer of cork, on top of various plastics and fabric
- Use a large needle (110)
- Resists well to water



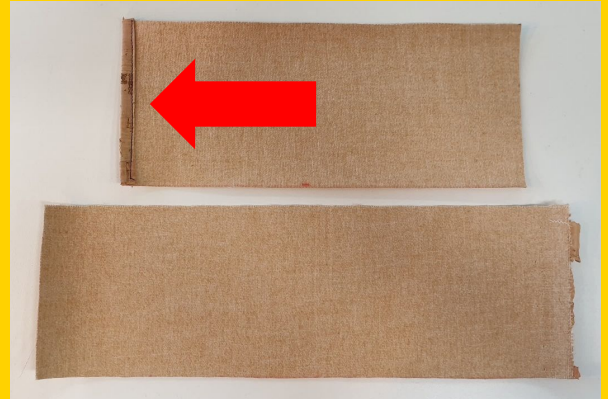
PROCEDURE

Double check the size of the small rectangle with your cutlery. You should have about 1 cm of spare fabric around them. Trim the edges if necessary.



PROCEDURE

Fold 0.5 cm on the short edge of the smaller rectangle of fabric and sew in place



Place both rectangles right sides together, as shown below. Sew along the 3 edges, sticking the needle in the fabric and lifting the pressure foot in the corners. Make sure to backstitch



Cut the corners, without cutting through the stitch.



PROCEDURE

Turn right side out. Take your time to avoid ripping the fabric. Use the folding stick (Falzbein) to pop out the corners



Finish the edges of the flap by folding it and sewing it in place.



Define the position of the pressure button on both fabric pieces and mark with a pen.

Make sure that the flap closes tightly, otherwise the cutlery might fall out.



PROCEDURE

Punch the holes in the indicated place



Add the pressure button

