

Elna Expressive 830



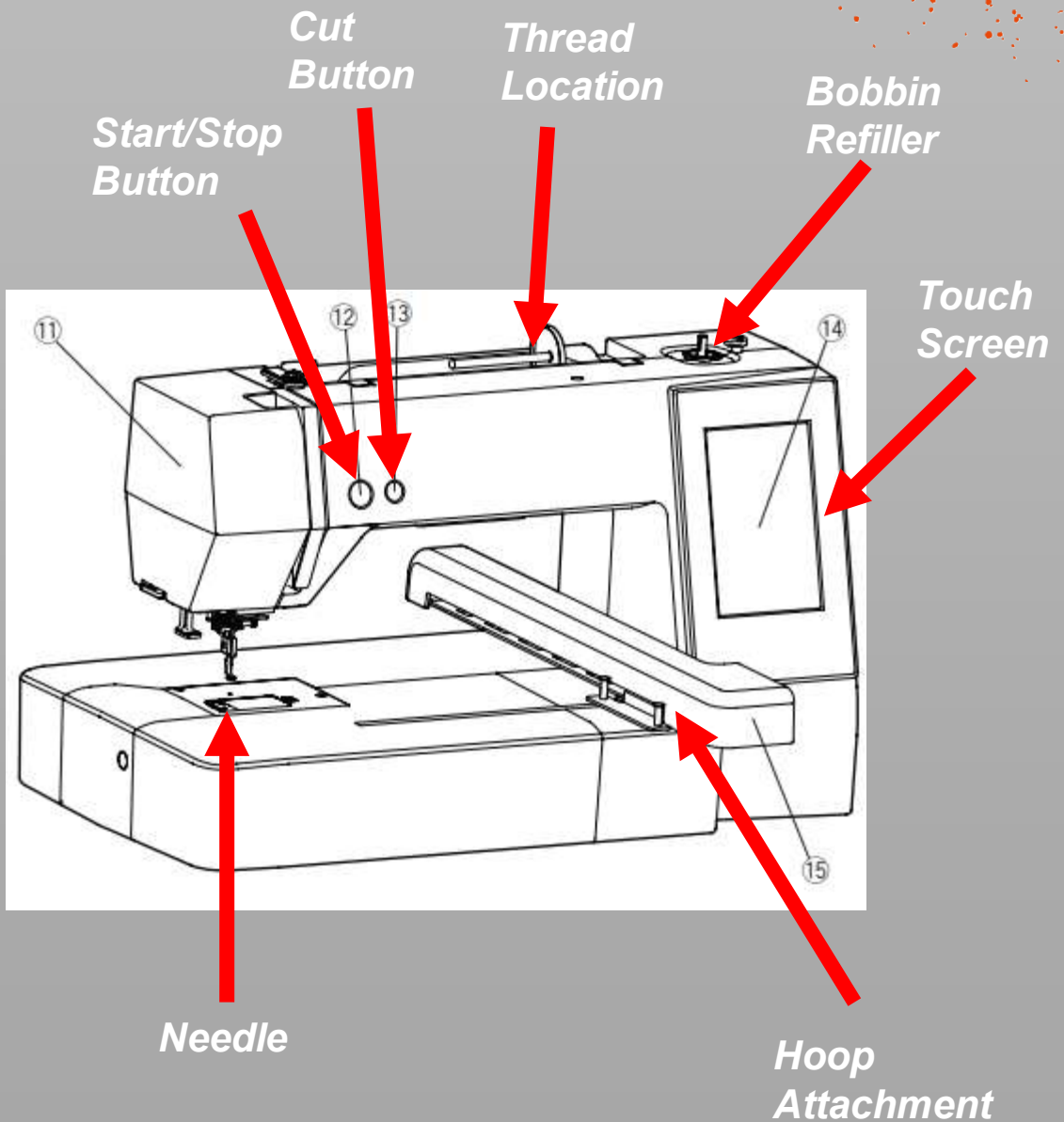
- *Computer controlled embroidery machine*
- *Maximal embroiding area: 200 mm x 280 mm*
- *Mono or Multichromatic designs*
- *Touch screen display*

Safety

- *Keep your hands away while embroiding*

Steps to print & Machine Overview

1. Iron on the vlies
2. Place your fabric inside a hoop with appropriate size
3. Change the thread to the desired colour
4. Prepare your model on the software
5. Export on the machine and start



Step 1: Adding the vlies

When embroidering you will need to add vlies to the back of the fabric. Without it the machine will make a big hole in your fabric. In addition, the vlies provides a unstretchy base, which keeps the design in place despite the movements of the machine.

We provide 2 options:

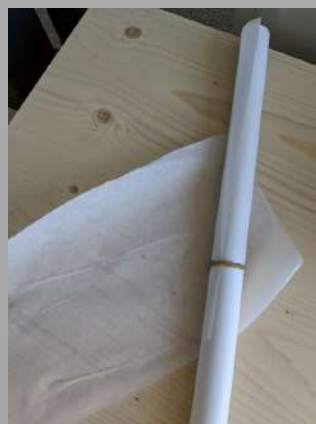
1. The thicker one is added to the back of your fabric and held in place by clamping into the hoop.
2. The thinner one can be ironed directly onto the fabric. This method is recommended.

For the iron-on vlies:

Turn on the heat press using the switch on the right side.

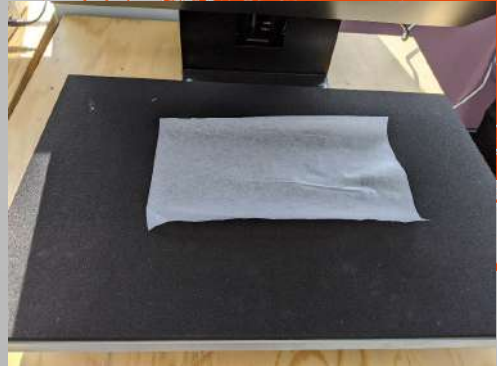


Cut it slightly bigger than the chosen embroidery hoop.



Step 1: Adding the vlies

Place the iron-on vlies with its shiny side up in the heat press.



Then place the fabric on top. The upper side will be the nice looking side of your embroidery.

Tip: For best results ensure that the fabric is ironed!



Close the heat press, wait for it to beep and open it up again. Done!



Step 2: Place your fabric inside a hoop

Choose the smallest hoop possible for your embroidery.

Hoop sizes available:

- 200 mm x 280 mm
- 200 mm x 200 mm
- 140 mm x 200 mm

Open up the hoop using the screw on the side and remove the inner part.



Place your fabric in the outer hoop, with the fabric facing up and the vlies facing down. Then add the inner hoop from the top.



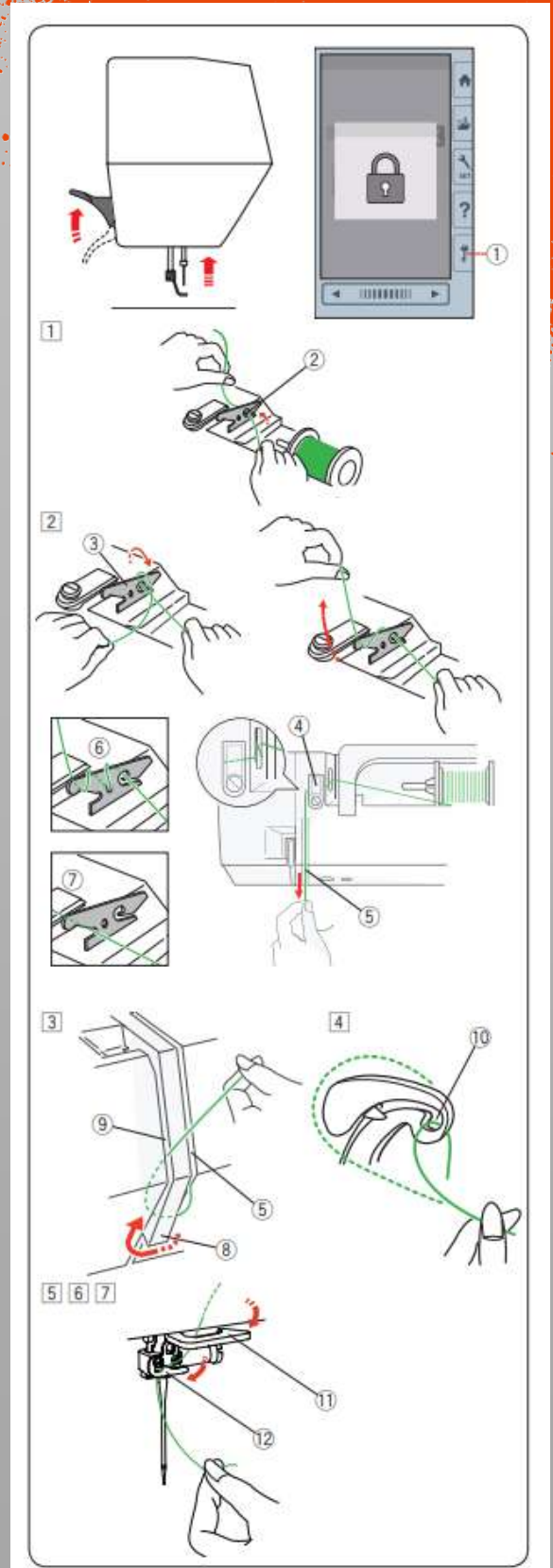
Fasten it using the screw. Pull on the fabric sides to tighten it wrinkle free. Then use the clips to fold the excess fabric out of the way. Make sure to add clips only on the locations shown on the picture.



Step 3: Change the thread

Use the special embroidery thread placed in the Ackerman embroidery thread box.

Lock the machine using the key button and raise the foot (1). Then feed the string according to the drawing on the right and the drawing/numbering on the machine.



Step 3: Change the thread

The machine has an automatic needle threader.

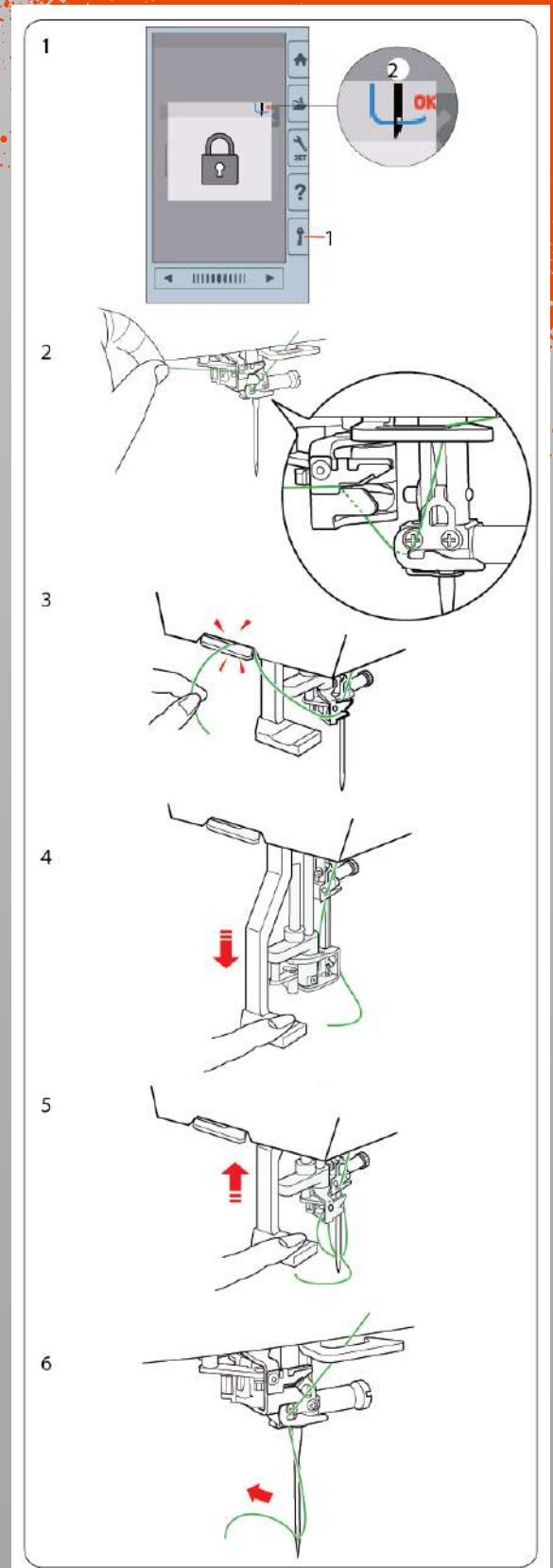
First lower the foot and turn the big knob on the right of the machine until the thread symbol appears on the display (1).

Ensure that the thread is inserted as shown (2).

If needed you can shorten the thread (3).

Push down the lever left to the needle all the way (4), then let go to have the thread being pulled through the hole (5).

At last pull the rest of the thread through the hole (6).



Step 3: Change the thread

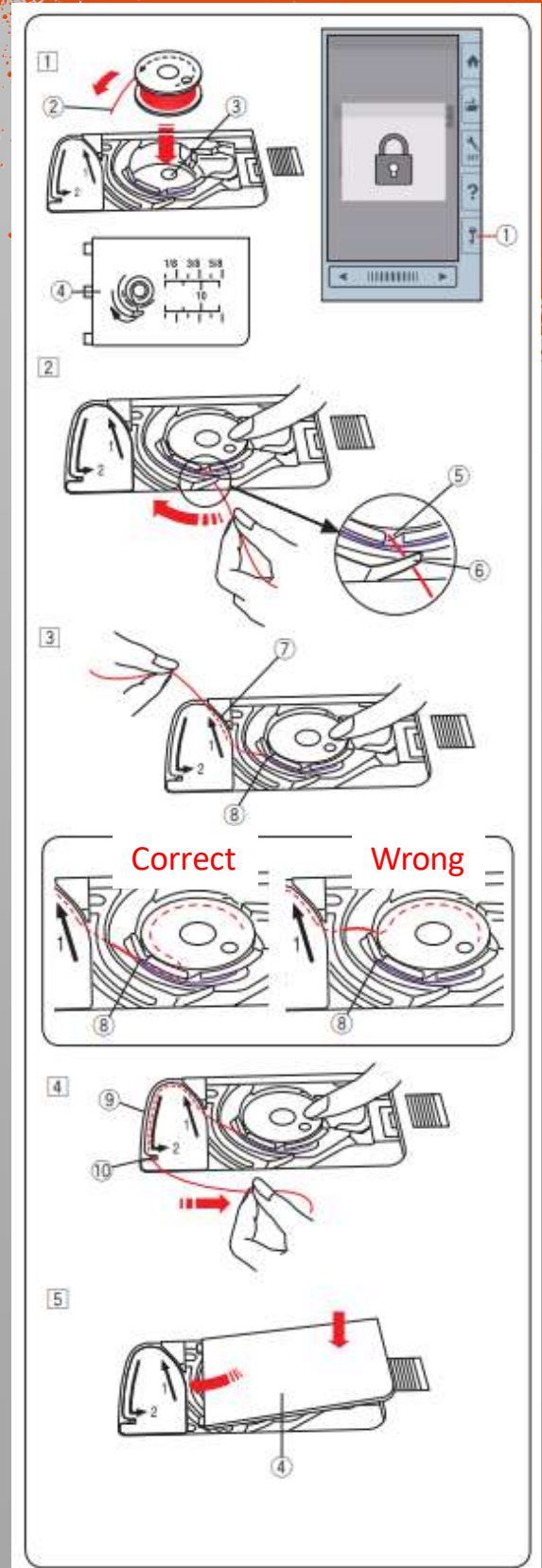
Next we need to insert the bottom thread (bobbin). Lock the machine as before and remove the plastic cover.

Place the spool in the holder and press it with your finger. Guide the thread as shown in (2).

Ensure that the thread follows the path as shown in (3).

Finally feed the thread as shown in (4). Notice that it will be automatically cut.

Put the plastic cover back (5).

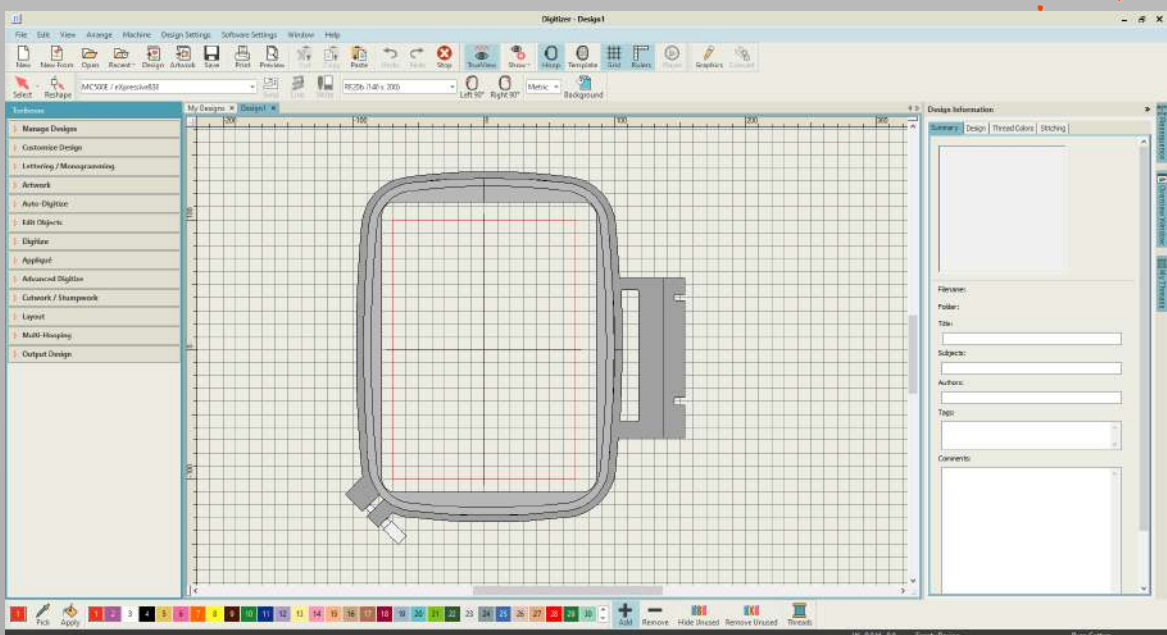


Step 4: Prepare your design

Open the Digitizer 5.5 Software



This is the base view of the software. As you can see the hoop is displayed.



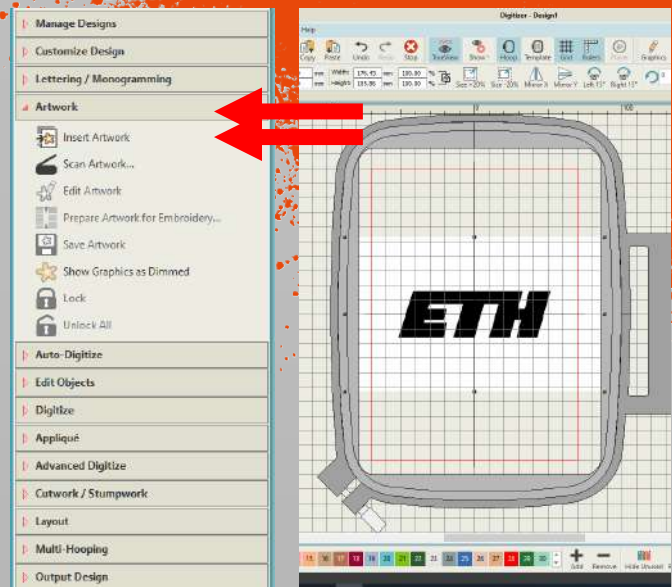
In the top bar, select the eXpressive830 machine and the hoop size you are using. In our example the hoop is the RE20b. The name can be found on the hoop's frame.



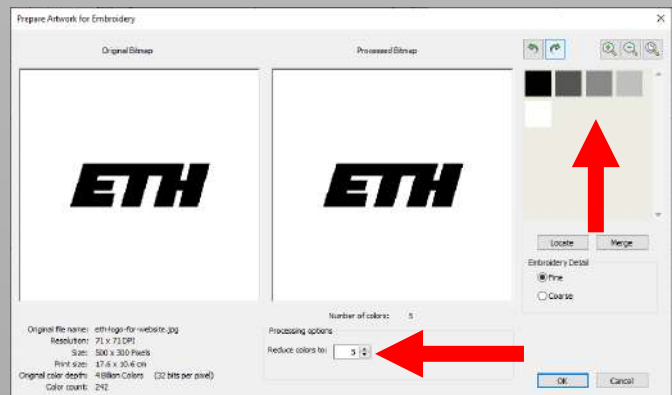
Step 4: Prepare your design

In the “Artwork” dropdown, click on “Insert Artwork” function to load your graphic.

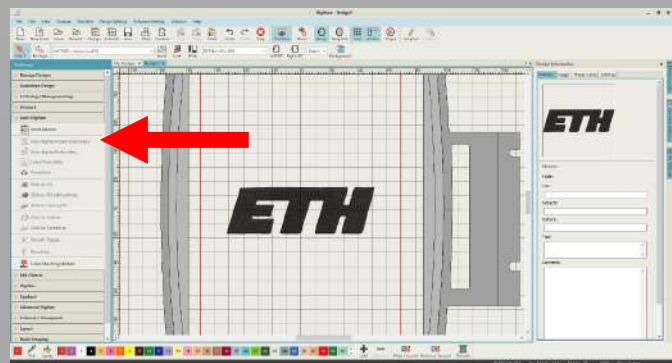
You can now modify your design using the “Prepare Artwork for Embroidery” function.



On the left you can see the original graphic, on the right the preview. Use the “Reduce colors to” option to make a simple 1 or multiple tone embroidery (one being the background). Press “OK”. You can see the number of colors on the right reducing.



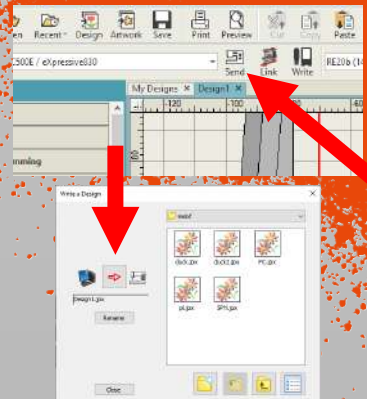
Use the “Auto-digitize Instant Embroidery” functionality to create the pattern for your modified graphic.



Step 5: Export your design to the machine and start

Turn on the machine.

Click on the “Send” button and then save your design as .jpx under «built-in / Embf / ...» using the red arrow to send.





Insert the hoop using the spring loaded lever.



Click the folder button on the screen and open the folder Embf. Then click on your design.



Click on the  button. Then select the  button to move the needle around your graphic. Make sure your model will be stitched over the vlies.

Lower the presser foot, hold the top thread and click on the start/stop button on the machine to start embroidering.



For multichromatic design, repeat the steps without removing the fabric from the hoop.

Once finished

Raise the presser foot and remove the embroidery hoop.

Remove your fabric from the embroidery hoop.

The vlies can easily be removed from the back of the fabric, and be torn away from the model.

Place the embroidery hoop, the embroidery thread and all the other tool the in the corresponding drawers. Ensure that the thread is in the correct position.



Extra: Refilling the bobbin

In case there is no bobbin with the correct color you will need to fill one. Take a spool with the thread of your choice and feed it through as shown in (1).

Place an empty bobbin on the pin on the top right of the machine and make some turns with the thread. Next push the pin next to it to the left.

The machine will automatically notice that you want to refill a bobbin. For the start make sure the speed is set to a minimum and press the “Start/Stop” button.

The machine will also automatically notice when the bobbin is full and stop. Cut the thread.

Done!

