

EASTER SPECIAL PROJECT

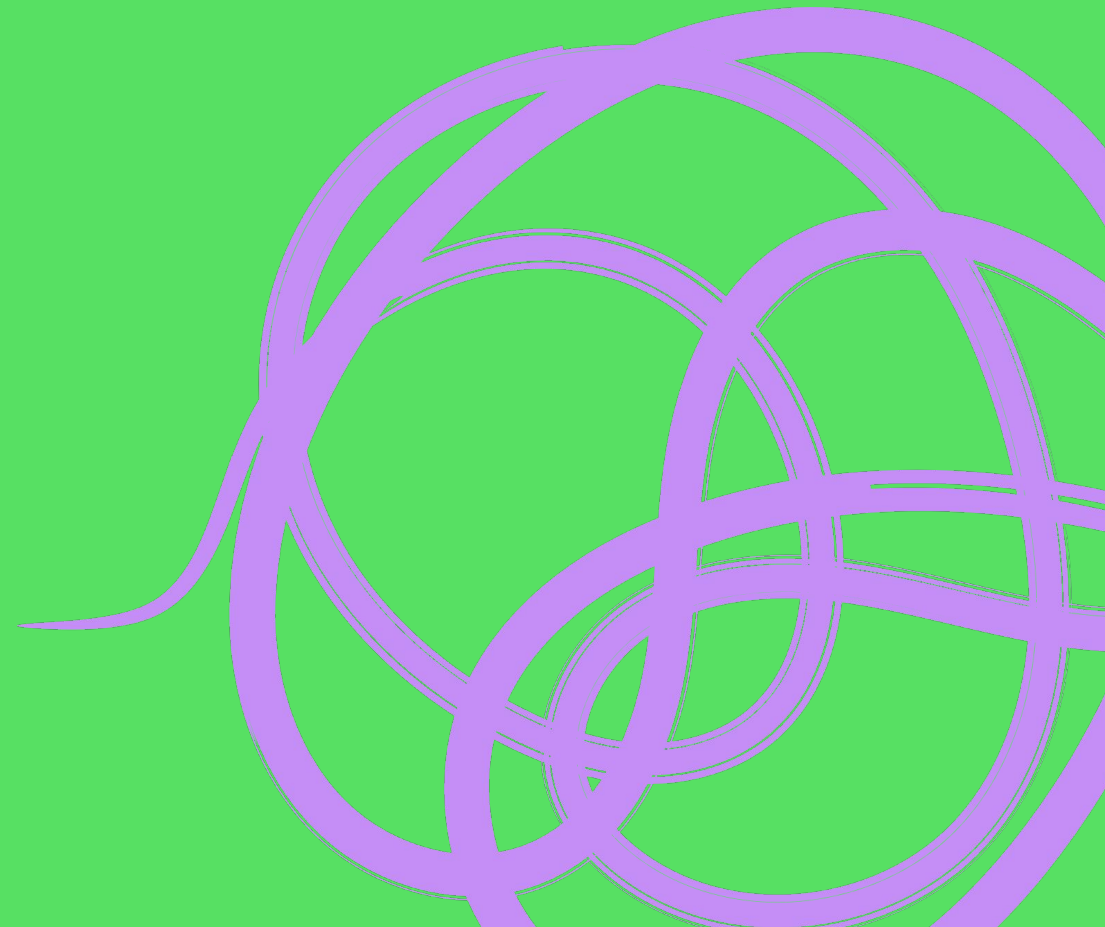
WOODEN BUNNY STAND



OVERVIEW

- **Level:** intermediate
- **Cost:** medium (depends on wood)
- **Machines:** Shaper Origin, belt sander
- **Tools/other:** palm router, Dremel, sanding paper
- **Materials:**
 - 2 wood pieces, at least 16x30cm
 - Wood glue

STEP 1:
MAKING THE BASE
[SHAPER ORIGIN]



1. Download file from our website
2. Using the Shaper Origin cut out the base.
 - Router bit: \varnothing 6mm.
 - Cut: “outside”.
 - Speed: 2.5.
 - Cut increments of 4mm until the full thickness of the wood piece is reached.



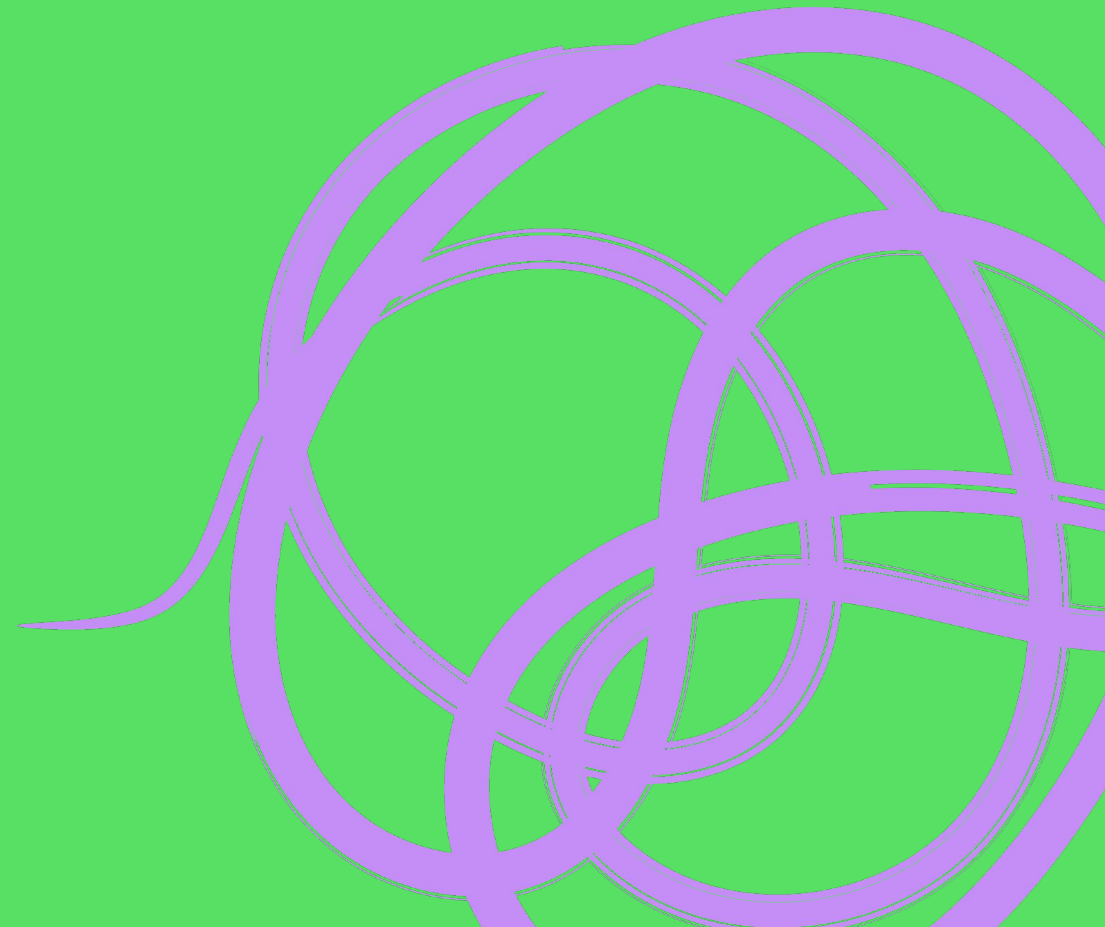
You end result will look like this:



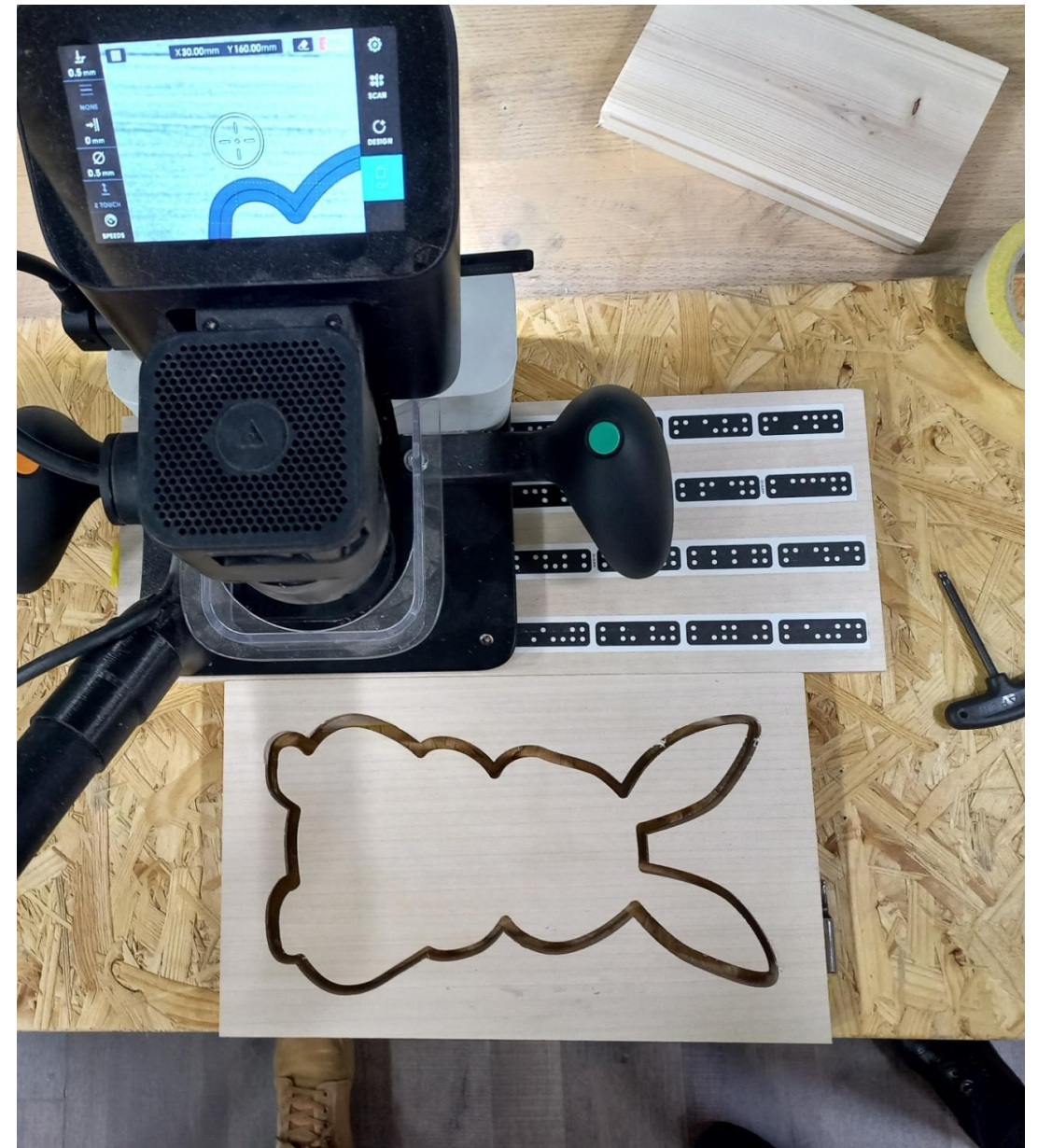
3. Use the belt sander to polish the sides.



STEP 2:
MAKING THE BUNNY
[SHAPER ORIGIN]



4. Repeat the same as point 2 to cut the shape of the bunny.
5. Once the cut is performed, secure the shape of your bunny back into its original wooden block with some double-sided tape.
6. Always using the Shaper Origin engrave the bunny features.
 - Router bit: engraver.
 - Cut: “in line” (we do suggest “pocket” for a more polished effect).
 - Speed: 5.



You end result will look like this:



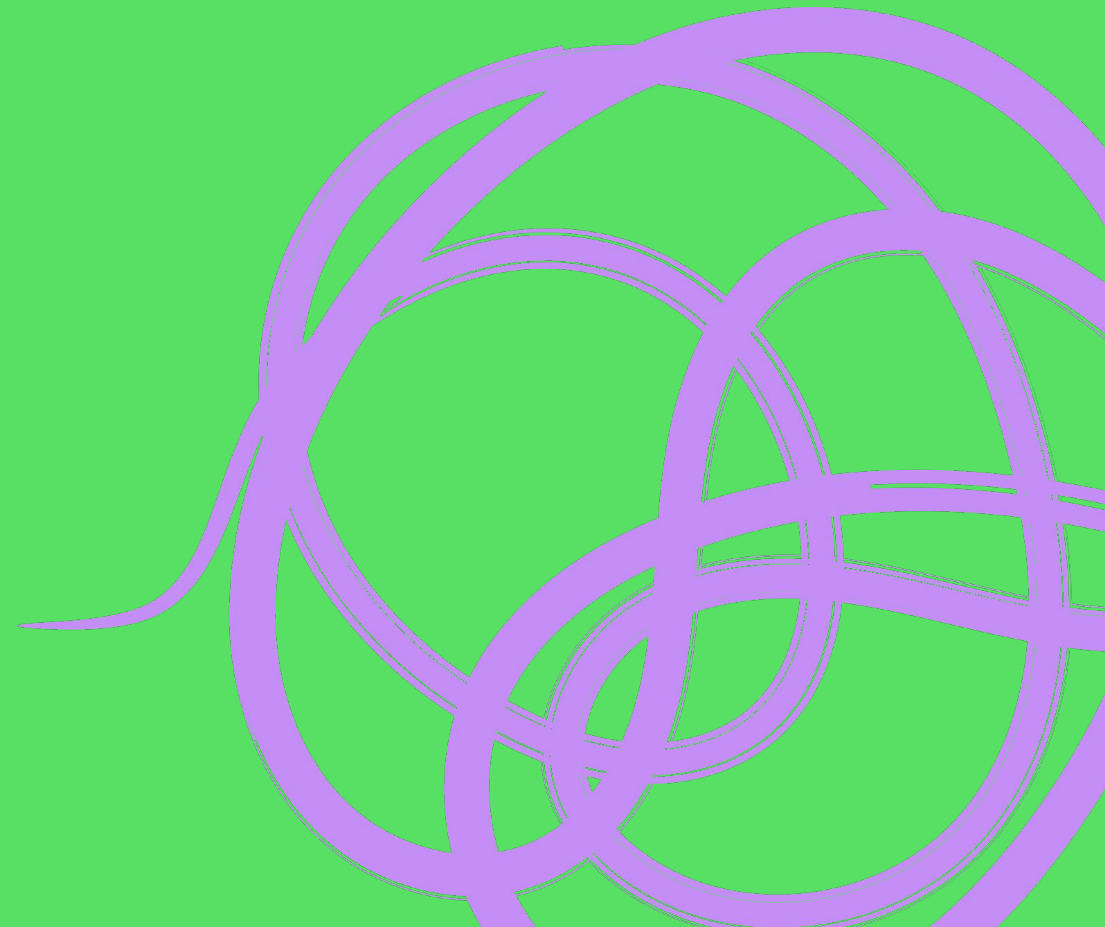
3. Use sanding to polish the sides.



OPTIONAL: for an even more defined result, use an palm router or a Dremel to round and soften the edges.



STEP 3: **ASSEMBLING**



1. Glue your base with your bunny. The piece is almost finished...



Join your stand with the chocolate eggs sachets! Now you have the perfect Easter gift.

