

EASTER SPECIAL PROJECT

EGGS SACHET



OVERVIEW

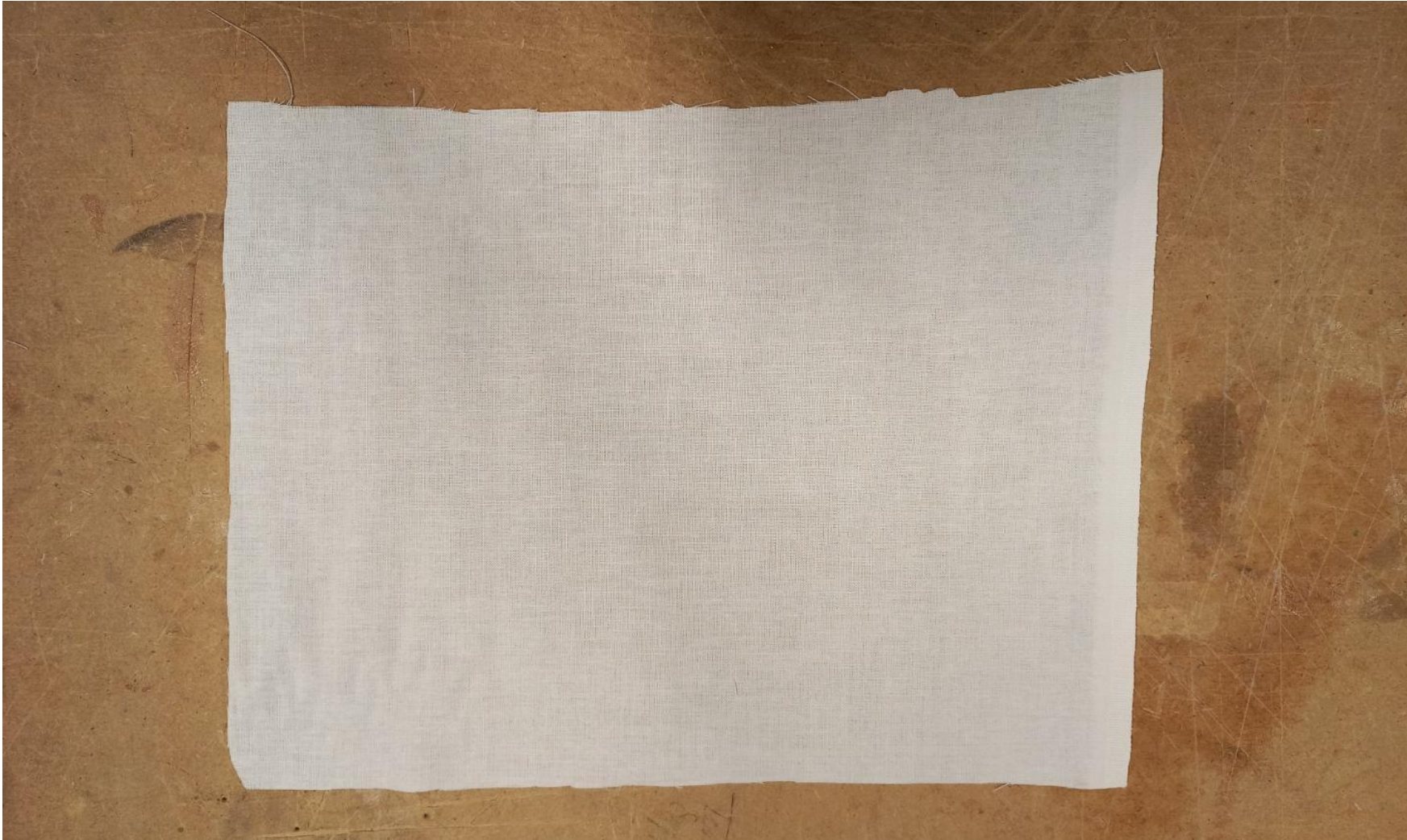
- **Level:** beginner
- **Cost:** low (∩ 6CHF excl. chocolate eggs)
- **Machines:** sewing machine, overlock machine, cutting plotter, heat press
- **Tools/other:** iron, safety pin, straw
- **Materials:**
 - 30x21.5cm fabric → upcycle some old clothing, bedsheet, or similar!
 - 15cm Textile foil (if provided graphics) → Makerspace Shop
 - 36cm Jute rope or ribbon → Jumbo // Jumbo
 - Chocolate eggs → Coop


STEP 1:

CREATING THE SACHET [OVERLOCKER, SEWING MACHINE]



1. From a bigger piece of fabric cut off a 29x21.5cm piece.



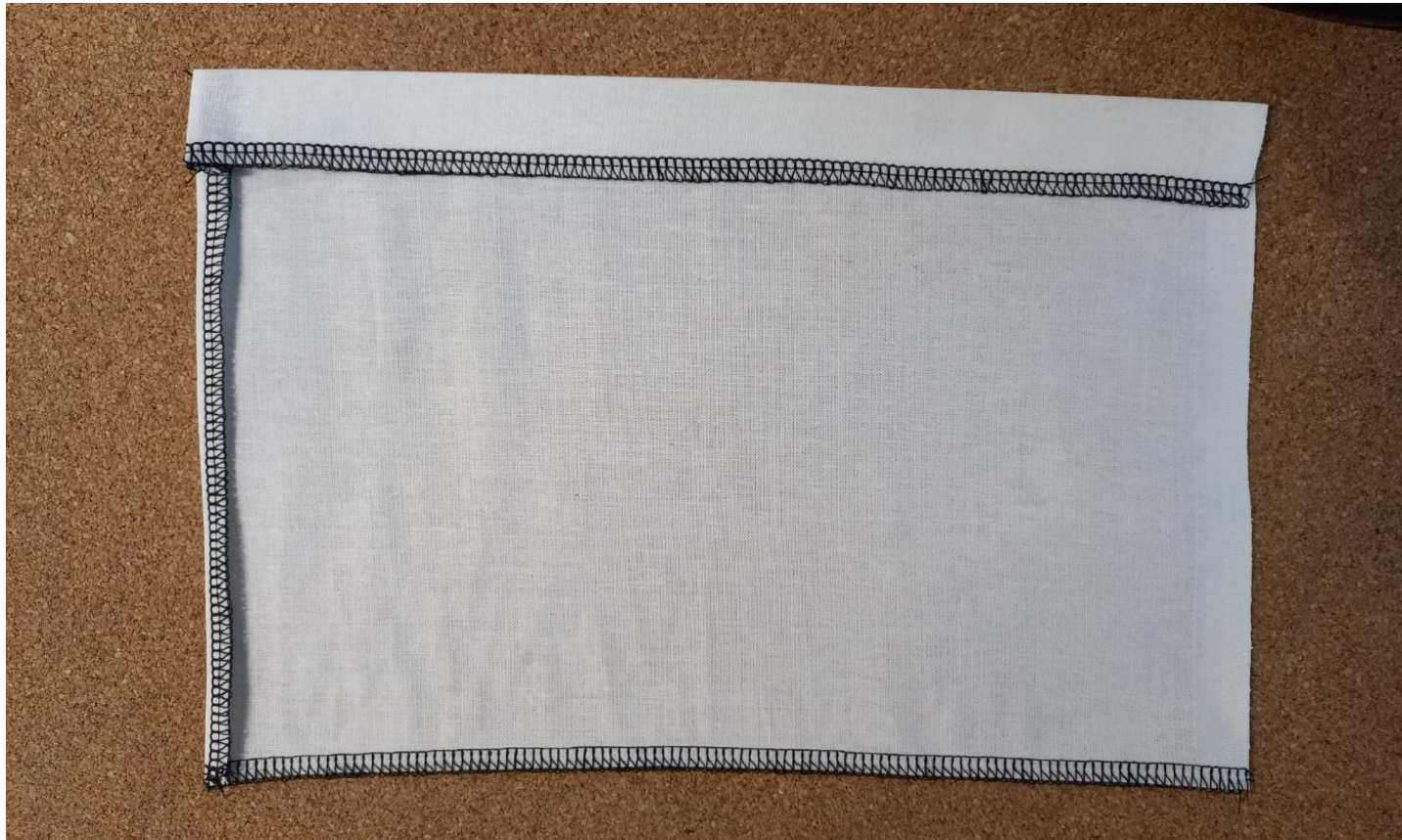
2. Place the fabric under the presser foot of the overlocker, ensuring the edge of the fabric aligns with the cutting blade. Start sewing, allowing the machine to trim excess fabric while simultaneously stitching over the edge with a neat overlock stitch.
3. Repeat this process for all 4 edges, to prevent fraying.
4. Optional: you can perform this step with a normal sewing machine, using the “zig zag” stitch and stitching along the 4 edges. Zig zag stitch ☐ 



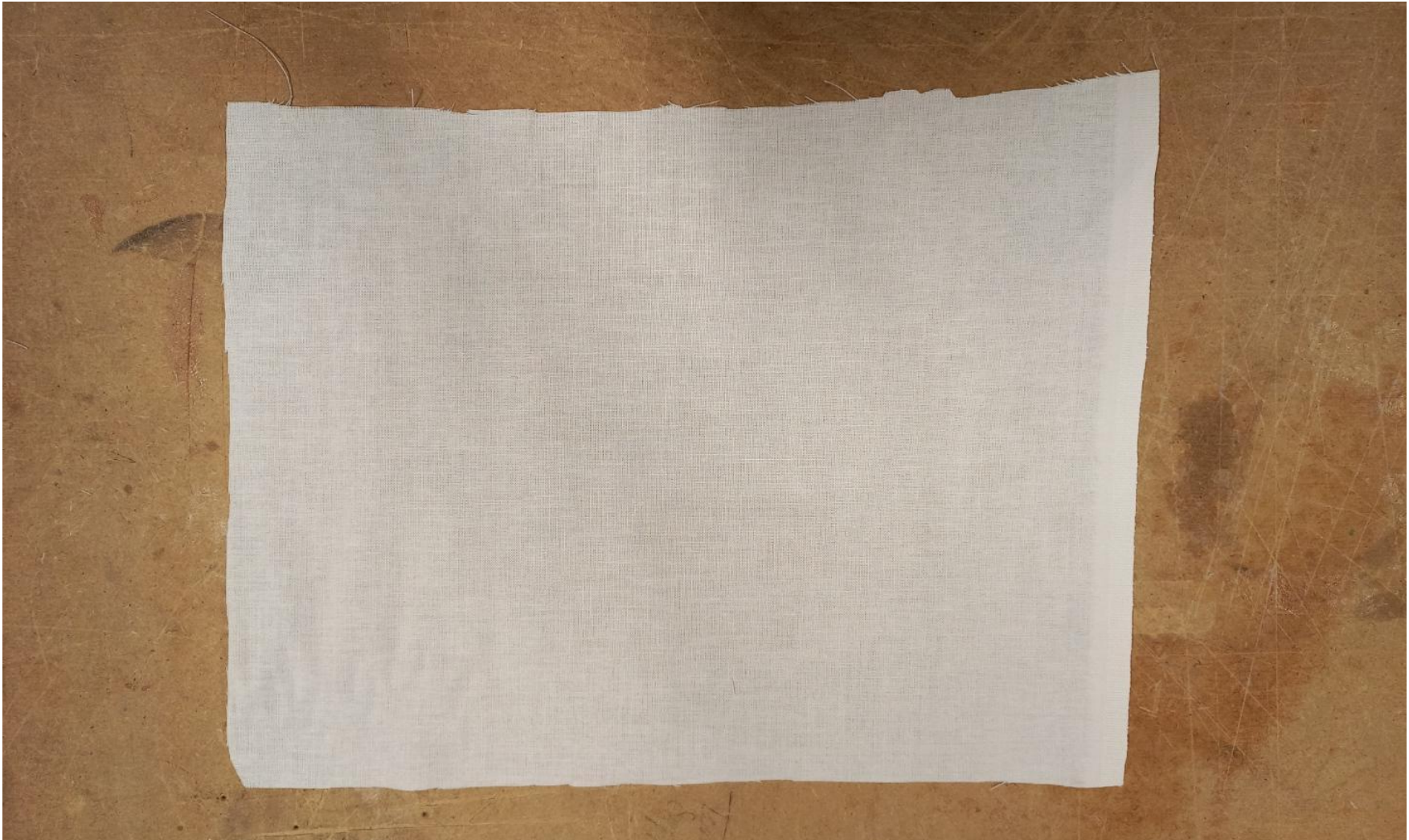
You will end up with something similar:




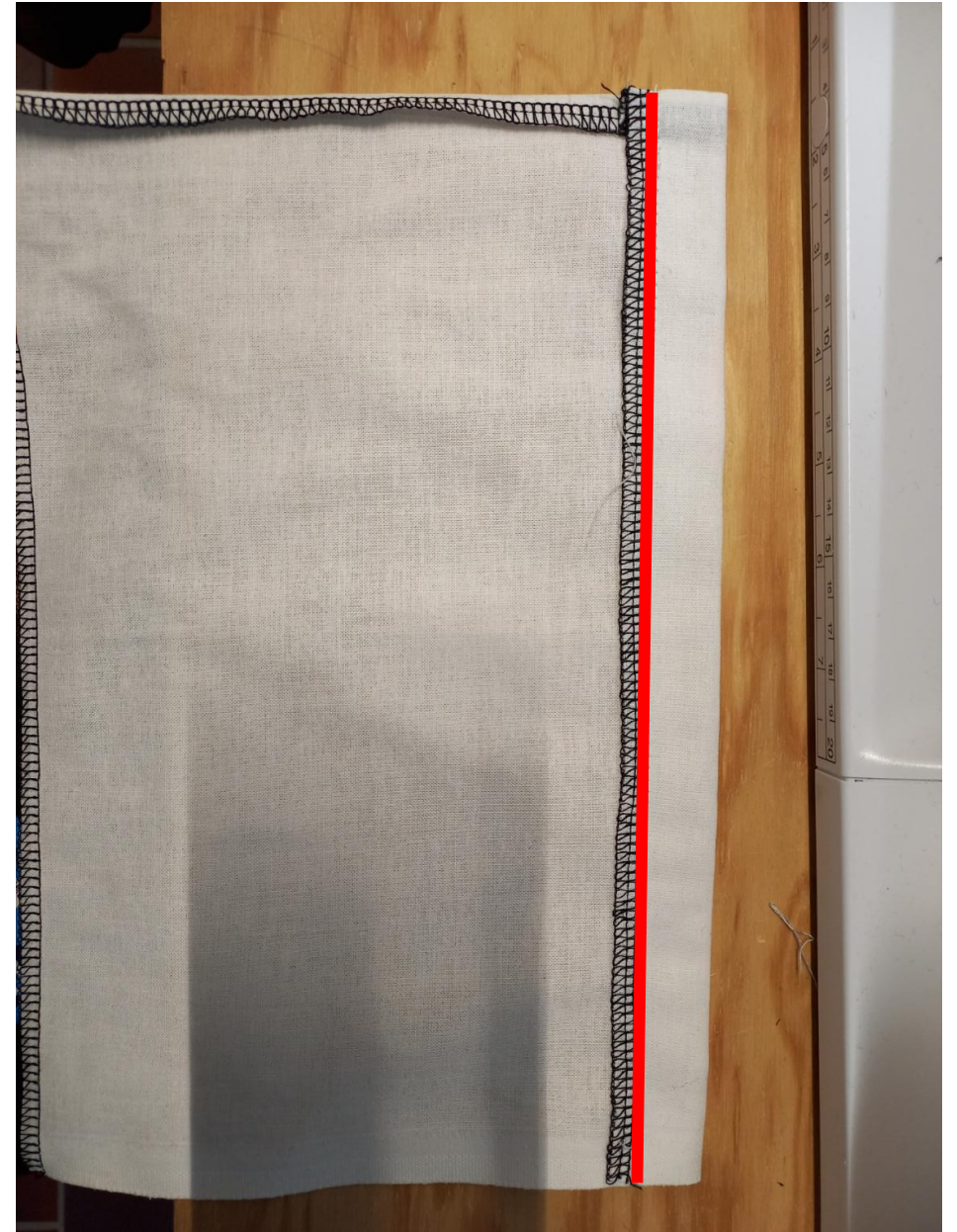
4. Press the edges with an iron, as shown in the picture. The top part will be sewn to create a little “tunnel” for the rope/ribbon to go through. The side, instead, will be sewn close so the overlock stitch will not be visible. Remember that if you are using a fabric which has a good and bad side, **during this step you should be facing the bad side of the fabric.**



You will end up with something similar:



5. Thread your sewing machine with the appropriate thread color and adjust the stitch length and tension according to your fabric. Stich length recommended would be between 2 and 3, tension will depend on the stretchiness of your fabric.
6. Optional: to have your fabric secured even more, pin it before sewing all along the red line (shown in picture).
7. Select a “top stitch” ☐ 
8. Start sewing along the **red line (picture)**, **removing the pins as you go**. Backstitch at the beginning and end of each seam to secure your workpiece.



9. Fold your fabric in a half, aligning all the sides. Make sure your good sides are facing.
10. Always with a top stitch, sew the piece along the red lines shown in the picture. **Note: make sure NOT to sew close the part marked in green.**
11. Backstitch at the start and at the end, to secure you piece.
12. Turn your sachet inside out. You base is done, now onto the design...



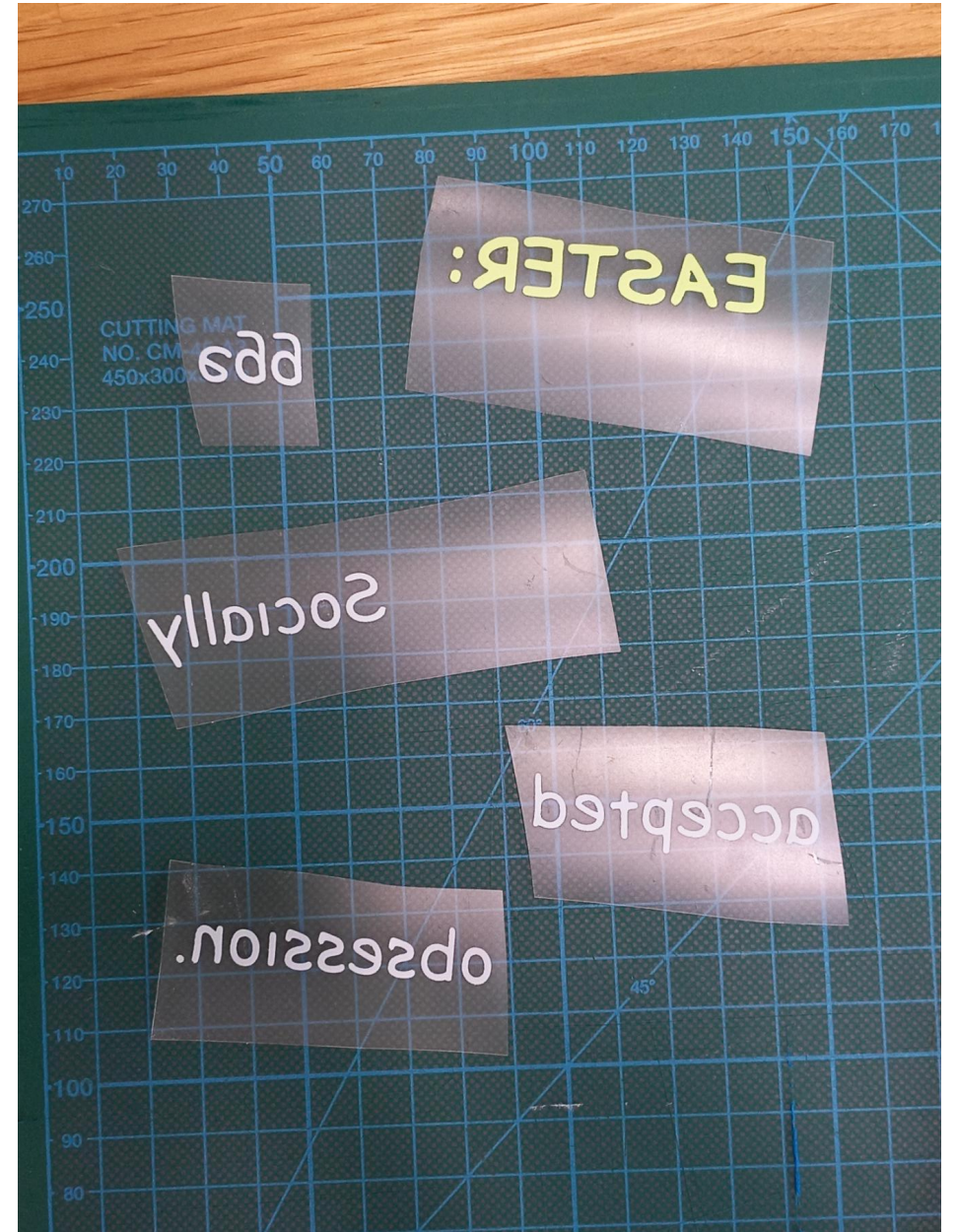
STEP 2:
ADDING THE DESIGN
[CUTTING PLOTTER]



1. Design your own Easter themed graphic or use the one provided with this project.
2. Using the plotter, cut it out of the vinyl foil.
Remember to mirror your design (if it is a text or has a specific direction) and to secure your material with the “rubbery” side on top!



3. Remove the excess background of your graphics and position them onto your sachet as you prefer.

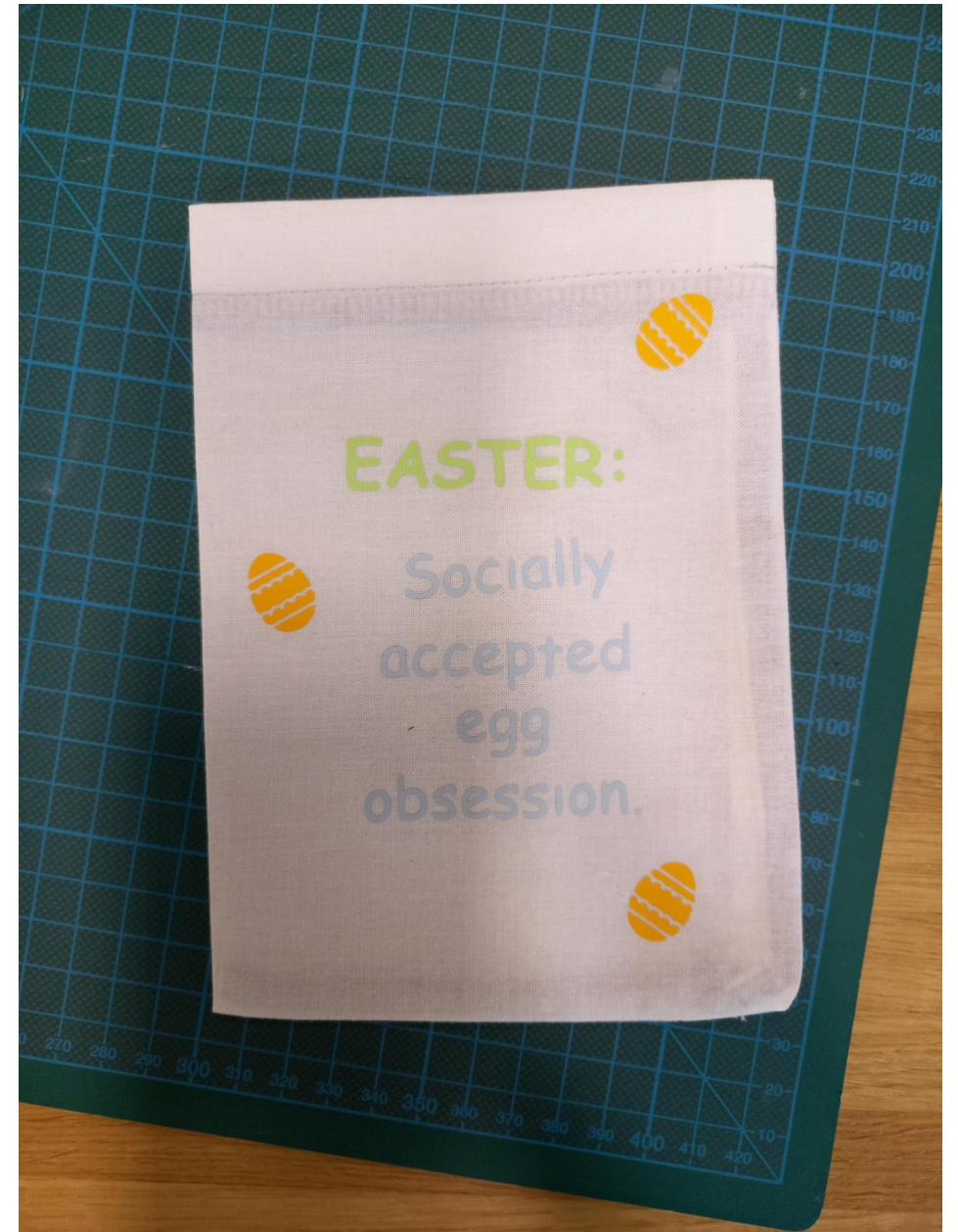


4. Transfer you piece in the heat press and cover it with a spare fabric (as a protection layer!).



The result should be something similar to this!

Your sachet is really almost ready!



5. Cut out from your rope or ribbon roll a piece 36cm long and gather a paper or plastic straw and a safety pin.



6. Have the safety pin go through both the rope/ribbon and the straw (as shown in the picture).



7. Push the straw through the one of the openings of your sachet, until it loops around comes out again.



7. Remove the safety pin and the straw. **Your sachet is done!**



Fill it with chocolate eggs!

